



innovative

planter solutions

PRODUCT CATALOG

- High Quality Planters
- Variety of Styles & Sizes
- Extensive Color Range
- Interior or Exterior

"The perfect planter solution for every environment"
Commercial · Institutional · Residential



Contemporary Styles
Innovative Colors



Espresso

Antique Gold

Golden Bronze

European Cylinders

Sleek Design and Sophisticated Style



Indulge in the elegance of simple flowing lines. It's like an ordinary planter went to Europe and came back cultured and with curves.

Available in a broad range of sizes and extraordinary color choices.

Manufactured in high quality fiberglass with every attention paid to detail in form and finish.

European Cylinders

EU-07	7.5" dia.	6.75" h
EU-10	10.75" dia.	10" h
EU-12	14" dia.	12.9" h
EU-14	15.5" dia.	14.5" h
EU-16	18" dia.	16.8" h
EU-20	22" dia.	21" h
EU-26	27.5" dia.	26" h
EU-34	35.5" dia.	34" h
EU-42	44" dia.	42" h



Refer to pages 18-19 for additional color choices.



European Squares and Rectangles

Combines Architectural Elements with Urban Style



Gun Metal

Gloss Black

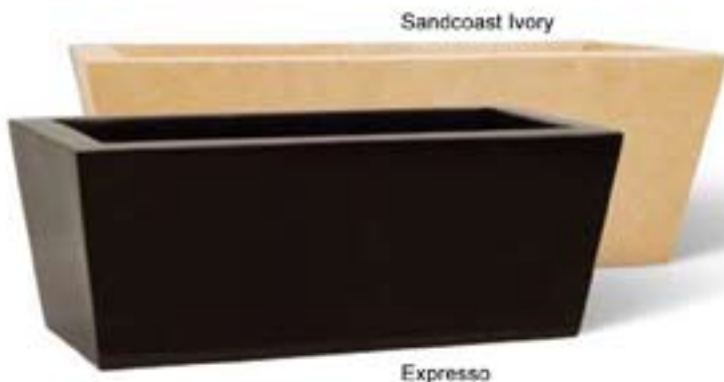
Deep Red



Whether you choose muted architectural tones or bold and vibrant colors these planters have the pure design lines to create a feeling of institutional strength and confidence.

European Squares

EUSQ-07	8" sq.	7" h
EUSQ-09	10" sq.	9" h
EUSQ-12	13" sq.	11.5" h
EUSQ-15	18" sq.	16" h
EUSQ-18	22" sq.	20" h
EUSQ-25	30" sq.	26" h
EUSQ-32	36" sq.	30" h



Sandcoast Ivory

Espresso

European Rectangles

EURT-1607	19" L x 9.5" W	7" h
EURT-2207	25" L x 10" W	8" h
EURT-3012	34" L x 16" W	12" h
EURT-3412	38" L x 16" W	16" h

Available in a broad range of sizes and extraordinary color choices.

Manufactured in high quality fiberglass with every attention paid to detail in form and finish.

European Tall Squares

Reaching New Heights In Contemporary Design



Strong architectural angles and impressive height puts plants more at eye level rather than at your feet. This planter series creates an immediate impression of excellent modern design.



European Tall Squares

EUTS-0508	5" sq.	8" h
EUTS-0714	7" sq.	14" h
EUTS-1326	13" sq.	26" h
EUTS-1530	15" sq.	30" h
EUTS-1836	18" sq.	36" h
EUTS-2142	21" sq.	42" h

Silver

Matte Black

Golden Bronze



a

b

c

d

e



f

g

h

i

j

k

l

Refer to pages 18-19 for additional color choices.

Colors

- | | |
|------------------|------------------|
| a. Dove Gray | f. Deep Red |
| b. Silver | g. Salmon Orange |
| c. Gun Metal | h. Burnt Orange |
| d. Pacific Blue | i. Sun Yellow |
| e. Electric Lime | j. Espresso |
| | k. Curry |
| | l. Beige |



Elegant Style
Versatile Design



Espresso

cylinder
square
tall square
rectangle
tall rectangle



Style in design needn't be expensive, these planters balance the line between great looks and practical price. Offered in the six colors with the option of choosing a wider spectrum of colors at additional cost.

Select Colors: Silver, Gun Metal, Black, Matte Black, Espresso & Golden Bronze.

Refer to pages 18-19 for additional color choices.



Silver

Optimum Cylinders

O1C-0807	8" dia.	6.7" h
O1C-1311	13" dia.	11" h
O1C-1815	17.8" dia.	15" h
O1C-2118	21.2" dia.	18" h



Gun Metal

Optimum Squares

O1SQ-0807	8" sq.	6.7" h
O1SQ-1311	13" sq.	11" h
O1SQ-1815	17.8" sq.	15" h
O1SQ-2118	21.2" sq.	18" h



Matte Black

Optimum Tall Squares

O1TS-0813	8" sq.	12.7" h
O1TS-1322	13" sq.	21.8" h
O1TS-1830	17.8" sq.	29.7" h
O1TS-2136	21.2" sq.	35.8" h



Golden Bronze

Espresso

Optimum Tall Rectangle

O1RT-321218	32" L x 12" W	18" h
-------------	---------------	-------

Optimum Rectangles

O1RT-220807	22" L x 8" W	7" h
O1RT-300807	30" L x 8" W	7" h



Ideal for Grand Spaces
that require a
Classic Elegance



Gloss Black

Fishbowl Planters

Where Elegance and Timeless Sense of Style come together



This classic design has remained virtually unchanged for thousands of years, there's no need to try to improve on the graceful lines and function of this iconic shape. With a broad range of color and texture choices, these planters will find their rightful place in any décor.

Fishbowl Planters

FB-8	8.5" dia.	6.8" h
FB-9	9.7" dia.	8" h
FB-13	13.7" dia.	11" h
FB-15	15.2" dia.	12.7" h
FB-17	18.2" dia.	15" h
FB-18	19.5" dia.	16.2" h
FB-23	25" dia.	20.2" h
FB-30	31.7" dia.	26" h
FB-38	40.5" dia.	33" h

Tall Fishbowl Planters

FBT-23	23" dia.	24" h
--------	----------	-------



Refer to pages 18-19 for additional color choices.

Available in a broad range of sizes and extraordinary color choices.

Manufactured in high quality fiberglass with every attention paid to detail in form and finish.



Enduring Style In A Classic Design



Gloss Black

Burgundy

Light Gray



In comfortable shapes, yet with bold features that set it apart as an extraordinary example of enduring Italian design inspiration. As in much of classic architecture, these planters blend straight lines and curved features to evoke feelings of beauty and strength.

Refer to pages 18-19 for additional color choices.

Available in a broad range of sizes and extraordinary color choices.

Manufactured in high quality fiberglass with every attention paid to detail in form and finish.

Roma Series Planters

A Passion for Classic Italian Design

Roma Cylinders

RO-8	8.4" dia.	6.9" h
RO-11	11.5" dia.	8.2" h
RO-15	15" dia.	12" h
RO-19	19" dia.	15.5" h
RO-24	24" dia.	19.1" h
RO-30	29.5" dia.	25.4" h
RO-35	34.7" dia.	26.5" h
RO-41	41.2" dia.	28" h



Relic Bronze

Antique Gold

Roma Bowls

ROB-13	13.6" dia.	4.5" h
ROB-18	18" dia.	6.5" h
ROB-23	23.3" dia.	8" h
ROB-31	31.3" dia.	9.75" h
ROB-38	37.5" dia.	11.5" h



Gloss Black

Warm Brown

Roma Rectangles

ROR-26	25.5" L x 7.8" W	7" h
ROR-36	36" L x 16" W	20" h
ROR-48	48" L x 21.5" W	24" h



Metallic Bronze

Tuscan Gold

Roma Squares

ROS-21	20.8" sq.	19" h
ROS-27	26.9" sq.	22" h



Silver

Matte Black

Roma Wall Planters

ROW-245	24" W x 19.2" h
ROW-305	29.5" W x 25.4" h
ROW-345	34.7" W x 26.5" h



Burnt Copper



Understated Design Contemporary Style



Choose the minimalist appeal of the modern Brushed Chrome look or the warmth of the Brushed Brass, Brushed Bronze or Burl Wood tones.

Rich Actual Metallic Foil or Wood tone veneers laminated to durable polystyrene planters.

Pinnacle Planters

Fundamental Designs In Metallic Finishes

Pinnacle Cylinders

PT-7	7" dia.	6.5" h
PT-10	10.5" dia.	10" h
PT-12	12" dia.	12" h
PT-14	14.5" dia.	14" h
PT-16	16" dia.	16" h
PT-20	20" dia.	18" h

Pinnacle Low Profile Planters

LP-8	8" dia.	6" h
LP-9	9" dia.	7" h
LP-12	12" dia.	7" h



Brushed Bronze Brushed Silver Brushed Brass Burl Wood



Hanging

Pinnacle Hanging Planters

HP-9	9" dia.	7" h
LP-12	12" dia.	7" h

Pinnacle Rectangles

R-714	14" length	7" wide	6.3" high
RP-24	24" length	7" wide	7" high
RP-30	30" length	7" wide	7" high



Burl Wood

Also available in natural Burl Wood Finish in cylinders & 24" rectangles!

Cylinders



Low Profile



Divider mounting kits available for most 24" and 30" rectangle planters. Ideal to add style and color to office environments!



24" and 30" Rectangles



14" Rectangles

Traditional Rolled Rim Planters

Extremely Versatile and Functional Design Classics



Created to Directly Replicate Actual Italian Traditional Planters

Equally at home creating a welcoming entryway, courtyard, pool deck or used to bring life to an otherwise sterile pedestrian mall or parking garage. These planters are constructed using modern, lightweight materials that are virtually unbreakable. Beauty that's designed to endure extremes of bitter cold or year of direct tropical heat and sunlight and stay looking great.

True color, finishes and texture, available in grand sizes easily bringing life to large open spaces indoors or out. Durable color molded throughout to withstand heavy traffic, also available in several beautiful hand rubbed finishes.

Dark Brown



Sandstone



Terra Cotta



Saucers available for most styles, sizes and colors.

Classic Rolled Rim Planters

CMDB-25	9.75" dia.	7.75" h
CMDB-34	12.75" dia.	10.75" h
CMDB-40	16.25" dia.	13" h
CMDB-45	17" dia.	13.5" h
CMDB-51	19" dia.	15.25" h
CMDB-55	20.5" dia.	16.75" h
CMDB-63	24" dia.	18.75" h
CMDB-68	26" dia.	20.75" h
CMDB-80	29.75" dia.	24" h
CMDB-90	34.25" dia.	29" h
CMDB-95	37.25" dia.	28.25" h
CMDB-110	43.25" dia.	33.5" h

Whitewashed Sandstone



Hand Rubbed Finishes are priced differently than our standard colors.

Rubbed Earth



Hand Rubbed Finishes

Garland Planters

Traditional Style with Timeless Design Details



Rustic Rolled Rim Planters

CVLR45	18" dia.	15" h
CVLR55	21.5" dia.	19.5" h
CVLR68	28" dia.	24" h
CVLR90	35.5" dia.	32" h

Saucers available for most styles, sizes and colors.



Terra Cotta

Dark Brown

Sandstone

Rubbed Earth

Whitewashed Sandstone



Garland Rolled Rim

Garland Rectangle

Garland Bell

The Garland adornment on these versatile planters evoke thoughts of ageless beauty and attention to detail.

Garland Rolled Rim Planters

CNFA-30	11.3" dia.	9.5" h
CNFA-35	13.6" dia.	11.3" h
CNFA-40	15.3" dia.	13" h
CNFA-45	17.3" dia.	13.8" h
CNFA-67	25.8" dia.	20" h

Garland Bell Planters

CMFE-42	16.5" dia.	13" h
CMFE-48	19" dia.	14.5" h
CMFE-72	27" dia.	22" h

Garland Rectangular Planters

CFE-60	23.5" L x 11" W	9.5" h
CFE-80	31.5" L x 14" W	13" h



Terra Cotta

Sandstone

Tall Thai Squares

TS-145	14.5" dia.	22" h
TS-185	18.5" dia.	30.5" h

Old Moss



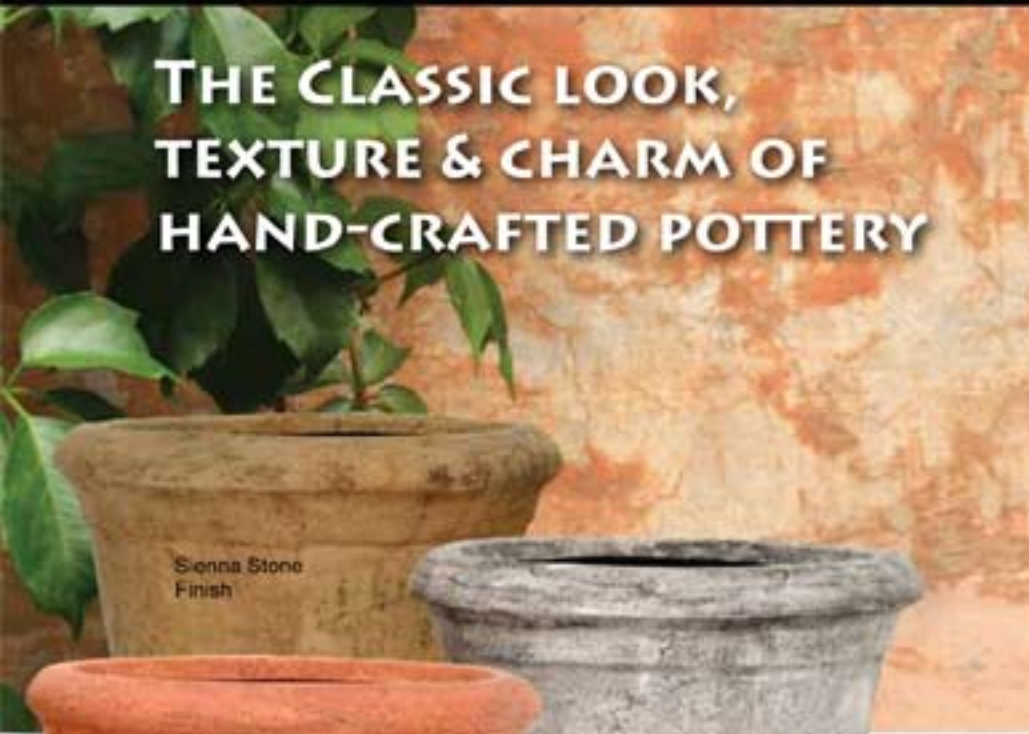
Whitewashed Terra Cotta



Old World Series Planters

Enduring Styles in Authentic Colors and Finishes

**THE CLASSIC LOOK,
TEXTURE & CHARM OF
HAND-CRAFTED POTTERY**



Sienna Stone
Finish

Ancient Clay
Finish

Sandstone
Finish

Limestone
Finish



The true look of an ancient artifact with deep textured relief and weathered faux finishing on light-weight, modern fiberglass material.

Old World Series Planters

OW-9	9" dia.	7.8" h
OW-13	13" dia.	11.5" h
OW-16	16" dia.	14.8" h
OW-18	18" dia.	16" h
OW-24	24" dia.	21" h
OW-30	30" dia.	26" h
OW-36	36" dia.	31.5" h

Garland Old World Planters

GOW-9	9" dia.	7.8" h
GOW-13	13" dia.	11.5" h
GOW-16	16" dia.	14.8" h
GOW-18	18" dia.	16" h
GOW-24	24" dia.	21" h
GOW-30	30" dia.	26" h
GOW-36	36" dia.	31.5" h



Sandstone
Finish



The perfect choice for basic aesthetics and function in planters. Available in a range of colors and sizes, these economical commercial planters are color molded gloss plastic. Limited colors and sizes also available in matte finish.

Classic Accent Cylinders

CA-6	6.5" dia.	6" h
CA-8	8.5" dia.	7.5" h
CA-10	10.5" dia.	9.5" h
CA-12	12.5" dia.	12" h
CA-14	14.5" dia.	13" h
CA-16	16.5" dia.	15" h
CA-20	20.5" dia.	19" h



Classic Accent Low Profile Planters

CAL-7	7.5" dia.	6" h
CAL-9	9" dia.	7" h
CAL-12	12.3" dia.	8" h

Classic Accent Colors: Beige, Black, Navy Blue, Stone, Burgundy, Evergreen, Light Gray, Dark Gray, Taupe, White, Charcoal.

Classic Accent Hanging Planters

CAB-10	10" dia.	6.5" h
CAB-12	12" dia.	7" h



Wall Sconces

PQ	12" dia.	6.5" h
----	----------	--------



Rectangular Planters

R-714	14" dia.	6.3" h
RP-24	24" dia.	7" h
RP-30	30" dia.	7" h

Wall Sconces and Rectangular planters available only in the colors shown. Colors may vary slightly from the colors of our cylinders, low profile and hanging planters.



Divider mounting kits available for most 24" and 30" rectangle planters. Ideal to add style and color to office environments!



Innovative Colors

the colors & finishes to make your designs come alive
available on all fiberglass planters



Quality, Consistency & Durability.

We bring you Colors and Finishes you can trust – now that's Innovative!

RAL has been the standard for choosing colors for more than 70 years. If you are not familiar with the RAL color standard, You can order a color swatch book that accurately represents over 200 color choices. You can be sure your color choices are precisely what you're looking for.

We only use premium paints and finishes manufactured by PPG Industries to assure beautiful, high quality, long lasting appearance.



Gloss Black



Matte Black



Golden Bronze



Relic Bronze



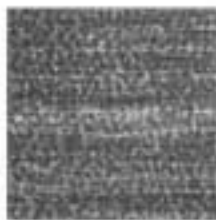
Metallic Bronze



Gold



Antique Gold



Metallic Silver



Silver Gloss



Silver



Gun Metal



Steel Gray



Dark Gray



Light Gray



Dove Gray



Espresso



Moccasin Brown



Saddle Brown



Burnt Copper



Burnt Orange



Sienna Orange



Desert Orange



Orange



Sun Yellow

Color can take an ordinary planter and make it an extraordinary addition to any decor.

In addition to Innovative color choices we offer an expansive selection of custom painted options for our fiberglass planters. It has never been easier to choose exactly the right color for the best visual appeal.

The colors shown on these pages represent our Innovative colors that ship within days.

In addition, we also offer over 200 more colors using the RAL color standard. Using this standard we can match virtually any color scheme, corporate identity or institutional color in your choice of high gloss, satin or matte finishes.

As an option, we also offer "Duraguard" exterior clear coats for superior durability in high traffic areas and extra UV protection from extreme sunlight outdoors.



We professionally apply our stock and special order paints, textures and finishes to match virtually any design or color requirement.



